



Leicester, Leicestershire and Rutland Multi- Agency Safeguarding Arrangements

December 2024

Updated December 2025



Foreword from Leicester, Leicestershire and Rutland Safeguarding Partners

Our vision is for children and young people in Leicester, Leicestershire and Rutland (LLR) to be safe, well, and achieve their full potential.

Safeguarding the most vulnerable children in Leicester, Leicestershire and Rutland is a high priority for our organisations and all partners.

The local Safeguarding Children Partnerships were established in 2019 to oversee the multi-agency safeguarding children arrangements under the Children Act 2004¹ as amended by the Children and Social Work Act 2017².

We have since reviewed our arrangements in light of the updated government guidance Working Together to Safeguard Children 2023³. We recognise the central role that education play in safeguarding our children and we have therefore strengthened the role of education within the partnerships; schools, early years and other settings are now a core part of our arrangements.

We are committed to work together to safeguard children and have the ambition to provide all children and families within Leicester, Leicestershire and Rutland with the right support at the right time to help children reach their full potential.

Safeguarding is everyone's responsibility and for services to be effective each citizen, practitioner and organisation should play their part. We ask you the communities of Leicester, Leicestershire and Rutland to play your part to help us understand the needs of children and families in our area and help us in preventing harm.

As partnerships we will be sticking to our principles and aims:

- for clear accountability
- for clear and demonstrable influence and
- for equitable and fair contributions from all partners

We will be continuing to make sure that effective systems are in place to protect children from abuse and to prevent impairment to children's health and development. We want to be sure that children grow up in circumstances consistent with the provision of safe and effective care. We will ensure that action takes place to continue to improve practice and to enable all children to have the best possible outcomes.

1 www.legislation.gov.uk/ukpga/2004/31/contents

2 www.legislation.gov.uk/ukpga/2017/16/contents

3 [Working together to safeguard children 2023: statutory guidance](#)

Introduction

This paper sets out the revised local safeguarding arrangements as determined by the statutory safeguarding partners in accordance with the revised statutory guidance in Working Together to Safeguard Children 2023⁴. The arrangements are signed off through the appropriate governance process for local safeguarding partners: Leicester, Leicestershire and Rutland Integrated Care Board (ICB), Leicestershire Police, Leicestershire County Council, Leicester City Council, and Rutland County Council.



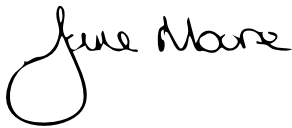
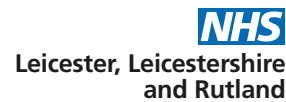
Alison Greenhill

Chief Operating Officer of
Leicester City Council



Toby Sanders

Chief Executive of Leicester, Leicestershire
and Rutland Integrated Care Board



Jane Moore

Chief Executive
of Leicestershire County Council



Mark Andrews

Chief Executive
of Rutland County Council



David Sandall

Chief Constable
of Leicestershire Police



⁴ www.gov.uk/government/publications/working-together-to-safeguard-children--2

Contents

1. Purpose	5
2. Background	5
3. Geographical Area	7
4. Safeguarding Partners, Delegates, and Partnership Chair	8
5. Structure and Governance	10
6. Youth Custody and Residential Homes	13
7. Independent Scrutiny and Assurance	13
8. Information Sharing, Escalation, and Thresholds	14
9. Funding	14
10. Review	14
Appendix 1: LRSCP & LSCP Membership and Relevant Agencies	15



1. Purpose

The purpose of this document is to set out local arrangements to safeguard and promote the welfare of children in Leicester, Leicestershire, and Rutland in line with the Children Act 2004 as amended by the Children and Social Work Act 2017⁵ and revised statutory guidance, Working Together to Safeguard Children 2023⁶.

2. Background

Amendments made by the Children and Social Work Act 2017 to the Children Act 2004 placed duties on Police, Integrated Care Boards (ICBs), and local authorities, as statutory safeguarding partners. Safeguarding partners are under a duty to make arrangements to work together, and with other partners locally, to safeguard and promote the welfare of all children in their area.

Jointly and equally the three safeguarding partners are responsible for establishing strong, collaborative leadership and effective multi-agency working to ensure that information is shared effectively, risk of harm is correctly identified and understood, and that children and families in their local areas receive targeted services that meet their needs in a co-ordinated way.

In accordance with the requirements and inclusions outlined in Working Together to Safeguard Children 2023 (paras. 40 and 103-104) these arrangements aim to ensure that at a local level:

- there is a clear, shared vision for how to improve outcomes for children locally across all levels of need and all types of harm
- when a child is identified as suffering or likely to suffer significant harm there is a prompt, appropriate and effective response to ensure the protection and support of the child
- organisations and agencies are challenged appropriately, effectively holding one another to account
- the voice of children and families combined with the knowledge of experienced practitioners and insights from data, provides a greater understanding of the areas of strength and/or improvement within arrangements and practice
- information is sought, analysed, shared, and broken down by protected characteristics to facilitate more accurate and timely decision-making for children and families, and to understand outcomes for different communities of children
- effective collection, sharing and analysis of data, enables early identification of new safeguarding risks, issues, emerging threats, and joined-up responses across relevant agencies
- senior leaders promote and embed a learning culture which supports local services to become more reflective and implement changes to practice
- senior leaders have a good knowledge and understanding about the quality of local practice and its impact on children and families

Local multi-agency safeguarding arrangements must be published and must include:

- arrangements for the safeguarding partners to work together to identify and respond to the needs of children in the area
- arrangements for commissioning and publishing local child safeguarding practice reviews
- arrangements for independent scrutiny of the effectiveness of the arrangements

⁵ www.legislation.gov.uk/ukpga/2017/16/contents

⁶ www.gov.uk/government/publications/working-together-to-safeguard-children--2

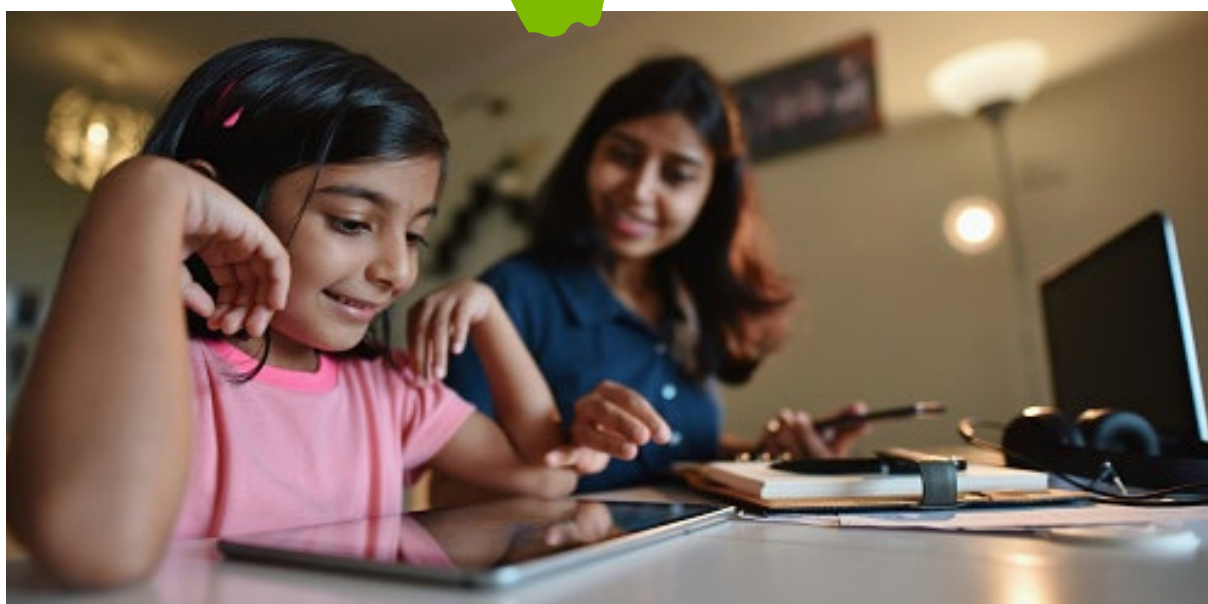
Arrangements should also include:

- who the three safeguarding partners, their delegates and partnership chair are
- geographical boundaries, including if the arrangements operate across more than one local authority area
- the relevant agencies the safeguarding partners will work with, why these organisations and agencies have been chosen, and how they will collaborate and work together to improve outcomes for children and families
- how all schools (including independent schools, academies, and free schools), colleges, early years and childcare settings, and other educational providers (including alternative provision) will be included in the safeguarding arrangements
- how any youth custody and residential homes for children will be included in the safeguarding arrangements
- how the safeguarding partners will share information and data safely and effectively, using arrangements that clearly set out the processes and the principles for sharing
- how the safeguarding partners will use data and intelligence to assess the effectiveness of the help being provided to children and families, including early help
- how multi-agency training will be commissioned, delivered, and monitored for impact, and how they will undertake any multi-agency and inter-agency audits
- how the arrangements will be funded
- the process for undertaking local child safeguarding practice reviews, setting out the arrangements for embedding learning across organisations and agencies
- how the arrangements will include the voice of children and families, including how to escalate concerns and how any disputes will be resolved, including whistleblowing procedures
- how the local threshold document in place aligns with the arrangements



3. Geographical Area

Multi-agency safeguarding arrangements should be based on local authority areas. Arrangements can cover two or more local authority boundaries by agreement. These arrangements cover three local authority areas (Leicester, Leicestershire and Rutland) and two safeguarding children partnerships: Leicestershire and Rutland Safeguarding Children Partnership (LRSCP) and Leicester Safeguarding Children Partnership (LSCP).



4. Safeguarding Partners, Delegates, and Partnership Chair

Working Together to Safeguard Children 2023 defines Lead Safeguarding Partners (LSPs) as Chief Executives of Local Authorities⁷, Chief Executives of Integrated Care Boards, and Chief Officers of police forces⁸. Each LSP should appoint a delegated safeguarding partner (DSP) for its agency, sufficiently senior to make decisions on behalf of the LSP and hold their organisation to account.

In line with Working Together to Safeguard Children 2023 the LSPs for Leicester, Leicestershire and Rutland are:

- Chief Constable of Leicestershire Police: David Sandall
- Chief Executive of Leicester, Leicestershire and Rutland Integrated Care Board: Toby Sanders
- Chief Executive of Leicestershire County Council: Jane Moore
- Chief Executive of Rutland County Council: Mark Andrews
- Chief Operating Officer of Leicester City Council: Alison Greenhill

Each LSP for Leicester, Leicestershire and Rutland has appointed a DSP as follows:

- Head of Serious Crime (Children) Detective Superintendent: Henry Henderson
- Deputy Chief Nursing Officer, Leicester, Leicestershire and Rutland Integrated Care Board: Chris West
- Interim Director of Children and Family Services, Leicestershire County Council: Sharon Cooke
- Strategic Director Children and Families, Rutland County Council: Kevin Quinn
- Strategic Director Social Care and Education, Leicester City Council: Laurence Jones

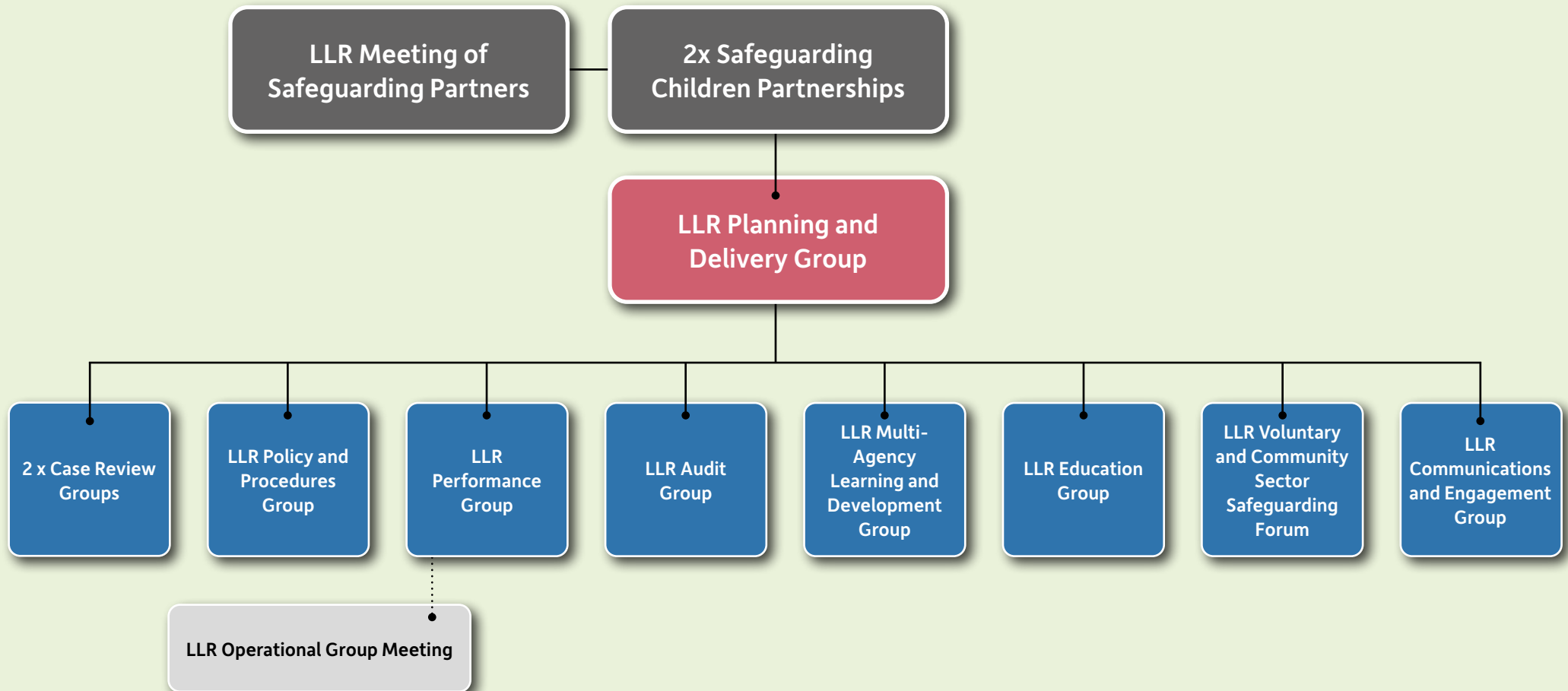
LSPs have appointed the role of partnership chair for the local multi-agency arrangements to individual DSPs rotating on an annual basis:

Business Year	Partnership Chair	Partnership Deputy Chair
2024/25	Leicester DSP, Laurence Jones	ICB DSP, Chris West
2025/26	Interim Leicestershire DSP, Sharon Cooke & Leicester DSP, Laurence Jones	Leicester DSP, Chris West
2026/27	Police DSP, Henry Henderson	Interim Leicestershire DSP, Sharon Cooke
2027/28	Rutland DSP, Kevin Quinn & Leicester DSP, Laurence Jones	Police DSP, Henry Henderson
2028/29	ICB DSP, Chris West	Rutland DSP, Kevin Quinn
2029/30	Leicester DSP, Laurence Jones & Interim Leicestershire DSP, Sharon Cooke	ICB DSP, Chris West

⁷ Head of paid service: [Local Government and Housing Act 1989 Section 4](#)

⁸ A chief police officer is the most senior police officer in a police force as defined in the [Police Act 1996 Section 101](#)

Structure Chart of Leicester, Leicestershire and Rutland Safeguarding Children Partnerships



5. Structure and Governance

LLR Meeting of Safeguarding Partners

Delegated safeguarding partners across Leicester, Leicestershire and Rutland and the Chair of the LLR Education Subgroup will meet at least eight times per year at the LLR Meeting of Safeguarding Partners.

This meeting will consider shared matters of governance, funding, and sharing intelligence as well as setting the forward agenda for meetings of the Safeguarding Children Partnerships (SCPs). The Independent Scrutineer and Business Managers will be invited to these meetings where appropriate.

Up to half of these meetings will be joint with the statutory partners of the local Safeguarding Adults Boards (SABs)⁹ and the Independent Chair of the local SABs will be invited to join these meetings where appropriate.

Lead Safeguarding Partners will attend two meetings of safeguarding partners per business year and will also receive regular updates from Business Managers in the form of a quarterly written report.

Safeguarding Children Partnerships

The Leicestershire and Rutland Safeguarding Children Partnership (LRSCP) and the Leicester Safeguarding Children Partnership (LSCP) meetings are quarterly meetings between safeguarding partners and 'relevant agencies'¹⁰ where they work together to safeguard and promote the welfare of children in the area. Relevant agencies are those organisations and agencies whose involvement the safeguarding partners consider are required to safeguard and promote the welfare of local children (a list of relevant agencies for each partnership is provided in Appendix 1).

At these meetings updates will be provided on the progress of the business plan and the work of the subgroups. The following areas of work will also be invited to present to the SCPs on an annual basis: Child Death Overview Panel, Local Authority Designated Officer, Front Door, Child Protection Chairs, Special Educational Needs and Disabilities, Corporate Parenting, Adolescence Safety and Diversion Board¹¹, and Domestic Abuse Locality Partnership Boards.

Planning and Delivery Group

The role of the Planning and Delivery Group (PDG) of the Leicester Safeguarding Children Partnership and Leicestershire & Rutland Safeguarding Children Partnership is to:

- Drive implementation of the partnerships' business plan
- Scrutinise and respond to multi-agency safeguarding performance and assurance
- Have oversight of learning from reviews
- Oversee the work of the partnerships' subgroups
- Agree learning and development arrangements

Membership of the group comprises of one representative of each of the safeguarding partners at assistant director or head of service level and the chair of the education subgroup. In attendance are chairs of subgroups for reporting, individuals invited for specific items, independent scrutineer and/or young scrutineer at their request, and business managers.

⁹ See [Care Act 2014 Schedule 2](#)

¹⁰ See [Children Act 2004 16E\(1\)\(b\)](#), [Working Together to Safeguard Children 2023 \(page 31\)](#) and [The Child Safeguarding Practice Review and Relevant Agency \(England\) Regulations 2018](#)

¹¹ The Adolescence Safety and Diversion Board sits under the local Strategic Partnership Board. For more information including a structure chart see www.violencereductionnetwork.co.uk/ourpartnership

Case Review Groups

Under our local multi-agency safeguarding arrangements LRSCP and LSCP have separate review subgroups, both known as Case Review Group (CRG). These groups commission Rapid Reviews and Local Child Safeguarding Practice Reviews¹² on behalf of the partnerships.

Joint arrangements for commissioning and publishing local child safeguarding practice reviews can be found via our Local Child Safeguarding Practice Reviews Framework and Practice Guidance¹³ on the LRSCP website.

LLR Policy and Procedures Group

The Policy and Procedures Group is responsible for overseeing and updating the multi-agency safeguarding children procedures manual¹⁴ of the Leicester, Leicestershire and Rutland Safeguarding Children Partnerships.

The procedures manual includes information on escalation, information sharing, and thresholds which are covered in more detail later in this document.

LLR Performance Group

The role of the Performance Group of the local Safeguarding Children Partnerships is to support the implementation of the Performance and Quality Assurance Framework¹⁵ of the partnerships. It does this by receiving and analysing data and performance information relating to multi-agency safeguarding children. The group also carries out multi-agency assurance processes including Section 11 audits.

The LLR Operational Group meeting feeds into the LLR Performance Group. The remit of the Operational Group is to allow managers, responsible for safeguarding children from across Leicester, Leicestershire and Rutland, a forum to discuss and work through identified issues. This is a standalone group but there is a dotted line in our governance chart that enables it to feed into the Performance Group.

LLR Audit Group

The Audit Group of the local Safeguarding Children Partnerships also supports the implementation of the Performance and Quality Assurance Framework. It completes audits as informed by the Performance Group and business priorities, learning from case reviews, national learning and Section 11 audits. The Audit Group plans, scopes and tasks multi-agency case file and spotlight audits and analyses the findings from these audits.

LLR Multi-Agency Learning and Development Group

This group facilitates and commissions multi-agency safeguarding children training and learning across the Safeguarding Children Partnerships. It develops and promotes practice resources¹⁶, runs our YouTube channel¹⁷, with the learning and development group of the Safeguarding Adults Boards has joint governance for Safeguarding Matters¹⁸ (the newsletter of the local Safeguarding Children Partnerships and Safeguarding Adults Boards which includes live versions presented via MS Teams), and runs conferences linked to safeguarding children.

12 For more information on Rapid Reviews and Local Child Safeguarding Practice Reviews see [Chapter 5 of Working Together to Safeguard Children 2023](#) and [Child Safeguarding Practice Review Panel guidance for safeguarding partners](#)

13 <https://lrsb.org.uk/child-safeguarding-practice-revi>

14 <https://llrscb.trixonline.co.uk/>

15 <https://lrsb.org.uk/uploads/scp-performance-and-assurance-framework.pdf?v=1758192227>

16 www.lcitylscb.org/learning-training-development/learning/resource-packs/

17 www.youtube.com/channel/UCn3N28JLV0VYL7nh7RxZYA

18 <https://lrsb.org.uk/newsletters>

It also oversees and updates the local competency framework¹⁹ that sets out the minimum requirements for safeguarding children learning expected by the local Safeguarding Children Partnerships.

LLR Education Group

All local schools (including independent schools, academies, and free schools), colleges, early years and childcare settings, and other educational providers (including alternative provision) are Relevant Agencies for the purpose of our multi-agency safeguarding arrangements. They will be included in the local safeguarding arrangements through this subgroup, the chair of which will be a member of the Planning and Delivery Group and the two Safeguarding Children Partnerships and will be asked to attend the Meeting of the Safeguarding Partners, as necessary.

LLR Voluntary and Community Sector (VCS) Forum

A forum run three times within each business year (and jointly with the local Safeguarding Adults Boards) shares Safeguarding Children Partnership updates with the Voluntary and Community Sector, faith-based organisations, and sports clubs/organisations, promoting the welfare of local children. This forum will also dedicate time to hearing feedback and input from those organisations about their experiences and knowledge of helping, protecting, and promoting the welfare of local children.

LLR Communication and Engagement Group

The communication and engagement group is responsible for hearing from local children and families about their experiences of safeguarding, as well as promoting comms messages to local communities. The group does not promote comms to practitioners as this is the role of the Multi-Agency Learning and Development Group.

19 www.lcitylscb.org/media/1920/competency-framework-2022.pdf



6. Youth Custody and Residential Homes

There are no Youth Custody homes within the local authority areas but those which are in the region which house young people from the area will be required to report on arrangements as and when necessary.

Leicester City Council runs residential homes for children. By the end of 2025 in-house capacity will include eight homes caring for up to 47 children and young people.

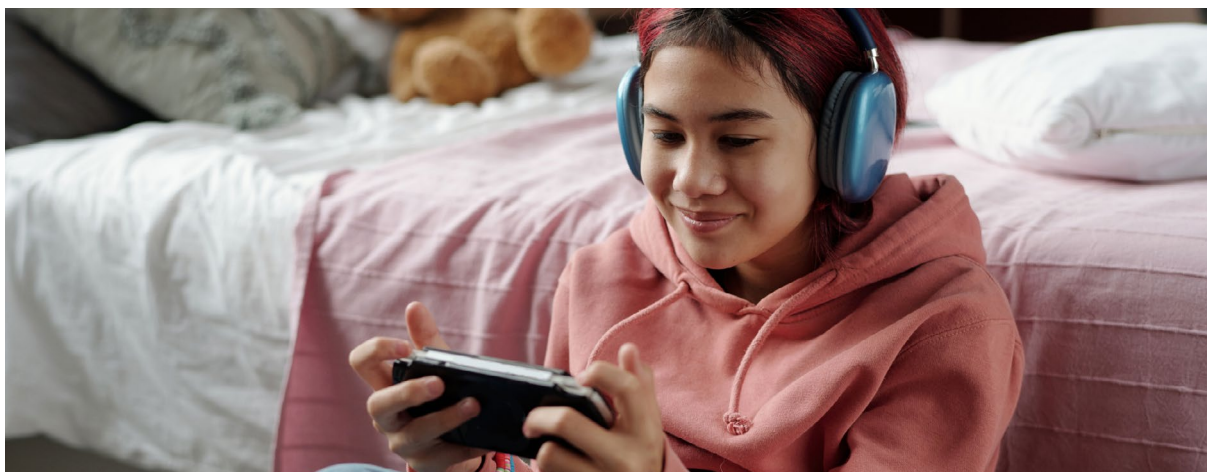
Leicestershire currently has four children's homes, run in partnership with Barnardo's. Over the next year there will be a further four homes opening.

Rutland Local Authority does not run any residential homes for children.

The Leicester, Leicestershire and Rutland Councils' Corporate Parenting Boards have responsibility for all children looked after by the Councils, including those placed outside the area.

The partnerships have procedures for notification of transfer of Children Looked After and safeguarding incidents regarding Children Looked After placed out-of-area and placed in area by other authorities.

As and when necessary, assurance will be sought from providers and the Local Authorities about the safe and effective running of all independent residential homes and foster care agencies who have a responsibility to notify the local authority of safeguarding issues.



7. Independent Scrutiny and Assurance

A rigorous and effective independent scrutiny function provides challenge to local safeguarding partners. Leicester, Leicestershire and Rutland safeguarding partners have ensured that there are arrangements for effective independent scrutiny in place for their local area to drive continuous improvement and provide assurance that arrangements are working effectively for children, families, and practitioners.

An Independent Scrutineer will provide independent scrutiny of the partnerships within a broader independent scrutiny framework. The role will involve visiting frontline settings to inform assessments of effectiveness and to strengthen partnership communication with frontline practitioners, and working with a Young Scrutineer to ensure the lived experience and voice of children is considered in all work undertaken by the partnerships and their subgroups including direct participation and feedback from children, young people and their families.

A Young Scrutineer will be appointed to work alongside our Independent Scrutineer to ensure the views and experience of a range of children across Leicester, Leicestershire and Rutland are at the centre of the work of the partnerships, to provide independent scrutiny from the perspective of a young person of the partnerships within a broader independent scrutiny framework, and to hold partnership members to account and challenge from a young person's perspective.

8. Information Sharing, Escalation, and Thresholds

The local multi-agency procedures manual hosts the Resolving Practitioner Disagreements and Escalation of Concerns procedure²⁰ which provides information about how to escalate concerns and how any disputes will be resolved.

It also provides an overview of information sharing good practice along with a copy of the LLR Information Sharing Agreement (ISA)²¹ for the purposes of safeguarding children.

The Thresholds for access to services for children and families in Leicester, Leicestershire and Rutland document²² can also be found on the multi-agency safeguarding children procedures manual.

9. Funding

Safeguarding partners (Police, ICB, and Local Authorities) fund the Safeguarding Children Partnerships. The business offices are hosted by the Local Authorities. No contributions, funding, or budget contributions are requested or received from relevant agencies at this time.

10. Review

In line with Working Together to Safeguard Children 2023 these arrangements will be updated when there are key changes, such as changes to the LSPs, or the list of relevant agencies, and any updates will be sent to the Department for Education (safeguarding.reform@education.gov.uk).

20 <https://llrscb.trixonline.co.uk/chapter/resolving-practitioner-disagreements-and-escalation-of-concerns>

21 <https://llrscb.trixonline.co.uk/chapter/information-sharing>

22 <https://llrscb.trixonline.co.uk/chapter/thresholds-for-access-to-services-for-children-and-families-in-leicester-leicestershire-and-rutland-childrens-social-care>



Appendix 1

LRSCP & LSCP Membership and Relevant Agencies

LRSCP Membership Safeguarding Partners

Leicestershire County Council
Rutland County Council
Leicestershire Police
Leicester, Leicestershire and Rutland Integrated Care Board

Relevant Agencies

Cafcass
District Councils
East Midlands Ambulance Service
Education and Childcare Providers²³
Leicestershire Fire and Rescue Service
Leicestershire Partnership (NHS) Trust
Probation Service
University Hospitals Leicester
In attendance: Independent Scrutineer, Business Manager, Legal Advisor

LSCP Membership Safeguarding Partners

Leicester City Council
Leicestershire Police
Leicester, Leicestershire and Rutland Integrated Care Board

Relevant Agencies

Cafcass
East Midlands Ambulance Service
Education and Childcare Providers²⁴
Leicestershire Fire and Rescue Service
Leicestershire Partnership (NHS) Trust
Probation Service
Rutland County Council
University Hospitals Leicester
In attendance: Independent Scrutineer, Business Manager, Legal Advisor

Additional relevant agencies for both LRSCP and LSCP are Sports, Faith, Community and Voluntary Organisations who will work with the partnerships through the VCS Forum²⁵.

²³ See LLR Education Subgroup on page 12 of these arrangements for more detail.

²⁴ Ibid.

²⁵ See LLR Voluntary and Community Sector (VCS) Forum on page 12 of these arrangements for more detail.

